

THERMOCOUPLE CONNECTORS—STRIPANELS

- 2-POLE MINIATURE/FULL SIZE
 - 3-POLE MINIATURE/FULL SIZE
- SELECTOR SWITCHES**
TERMINAL HEADS/LUGS/HANDLE



CONNECTORS MINI RSC & CONDUIT PANEL



MINI RSC PANEL JACK

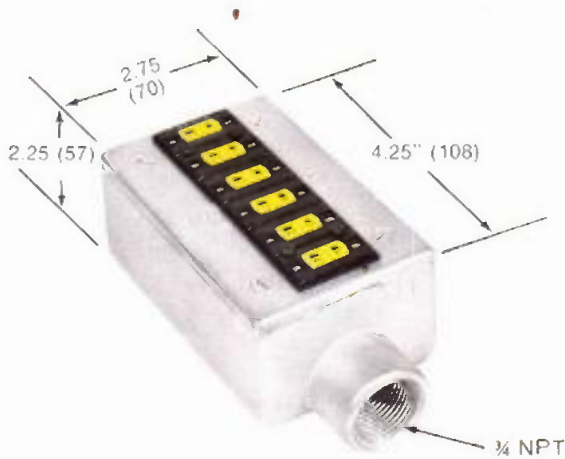
Mini round single circuit (RSC) module is assembled in a bracket for direct mounting in standard 1/2" electrical box knockout. Self-contained hardware provides front mounting in panels to 1/4" thick. ANSI calibration symbol and color code easily visible from the front. Adaptor available for 3/4" knockout.

DESCRIPTION	CODE NO.	PRICE	
Mini RSC Panel	1231-*		
Adapter Plate for 3/4" knockout	ADP-34		

*with Adapter Plate back side of mounting must be accessible.

When ordering, specify part number, adding ANSI calibration code * as a suffix.

MINI RSC MOUNTING HARDWARE (if ordered separately)			
Mini RSC Hardware	1295		



MINI PANEL IN CONDUIT BOX

Mini Stripanel modules are mounted in conduit box, cast aluminum construction. Circuits are color coded, numbered and lettered with ANSI calibration code. Available with 2 thru 6 circuits. Standard panels are provided with Mini Jacks.

NUMBER OF CIRCUITS	CODE NO.	PRICE	
2	1239-2-*		
3	1239-3-*		
4	1239-4-*		
5	1239-5-*		
6	1239-6-*		

When ordering, specify part number, adding ANSI calibration code * as a suffix.

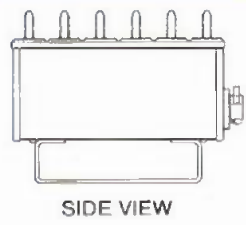
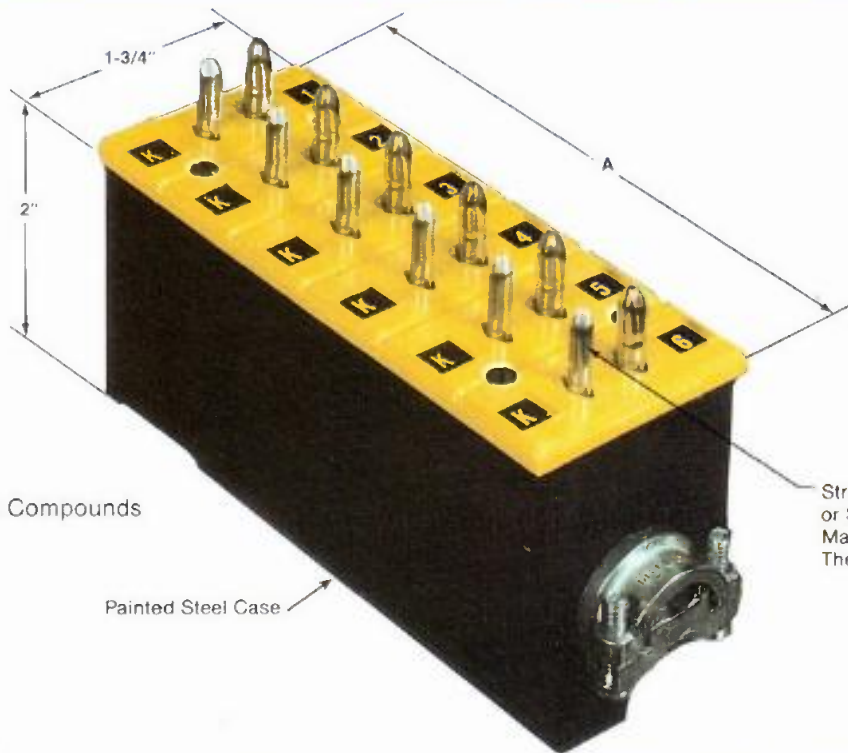


STANDARD TO MINI ADAPTER

Provides a reliable connection between a standard two pole plug and a mini jack. Available in J or K only.

DESCRIPTION	CODE NO.	PRICE	
STANDARD TO MINI ADAPTER	1044-J 1044-K		

CONNECTORS MULTIPLUG AND RSC (Round Single Circuit) PANEL



NO. OF CIRCUITS	"A"
2	1½"
3	2¼"
4	3"
5	3¾"
6	4½"

- 2 to 6 circuits
- Color Coded
- Molded of Thermoset Compounds
- See 1032 Stripanel[®] for specifications
- Standard 400° F
- Hi-Temp. 800° F

Strong Tubular or Solid Pins (optional)
Match ANSI Thermocouple Types

Painted Steel Case

2-POLE MULTIPLUG	
CODE NO.	PRICE EACH ¹
1062-2-(*)	
1062-3-(*)	
1062-4-(*)	
1062-5-(*)	
1062-6-(*)	

* - Specify calibration J,K,T,N,E,R,S,U,C
1 - For solid pins use No. 1052-()-() at extra cost.

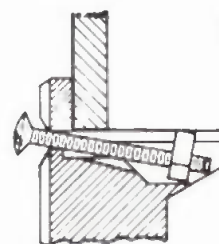
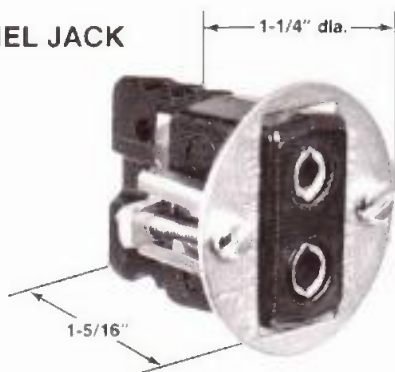
HI-TEMPERATURE 2-POLE MULTIPLUG	
CODE NO.	PRICE EACH
1162-2-(*)	
1162-3-(*)	
1162-4-(*)	
1162-5-(*)	
1162-6-(*)	

1) For hi-temp with solid pins, use No. 1152-()-() at extra cost.

Single circuit jack designed for mounting into control panel or instrument case can be wired and installed completely from the front. Fits in standard ¾" knockout (1½" diameter). **Permanently attached self-fastening device** simplifies mounting, holds tight.

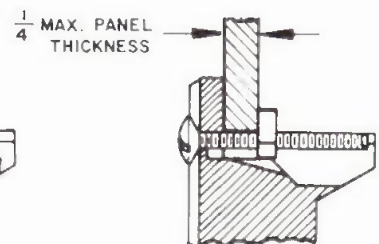
Patent No. 3046516

RSC PANEL JACK



ON RSC PANEL JACK OR STRIPANEL

Ready for installation, T-nuts are out of the way at bottom of track.



COMPLETELY FRONT FASTENING

Screws accessible from the front draw T-nuts up metal track and hold them tight against back wall.

RSC 2-POLE JACK PANEL	
CODE NO.	PRICE EACH ¹
1031-*	

HIGH TEMPERATURE RSC 2-POLE JACK PANEL	
CODE NO.	PRICE EACH ¹
1131-*	

NOTES: *Specify Calibration J,K,T,N,E,R,S,U,C

RSC MOUNTING HARDWARE (If ordered separately)	
CODE NO.	PRICE EACH ¹
1095	