

Operator Panels

Human Machine Interfaces



SmartPanels

- Five models in four sizes of 4.3", 7", 10.4" & 15"
- Very high resolution in 65535 colors
- WinCE 6.0 operation system
- Ethernet, USB host, USB client, 2 Serial ports & SD slot
- PROFIBUS, PROFINET, DeviceNet, EtherNet/IP
- CANopen, EtherCAT, CC-Link, Bluetooth
- Video input, Audio input/output, 128 MB Flash
- Metal enclosures for Rugged environments
- IP66K Stainless Steel front for food, beverage, pharma
- Vertical or horizontal display
- LED backlight for long lifetime
- USB Host for Printer, Keyboard, Flash drive and Mouse
- Low power consumption and fanless HMI's
- Optional AC power

Last Updated: July 01, 2009

Panel Studio

- Many PLC drivers supported
- Recipe management, Multilingual
- Script programming supported
- Data acquisition complied with FDA 21 CFR part 11
- Reports, Web Server & Alarm management
- Real-time trends, bar graphs & historical trends
- Lots fine made components, optional Symbol factory
- Data exchange with different PLC's simultaneously
- Free, Powerful and user-friendly editing software
- Online and Offline Simulation
- Special tools for Hitorical data archive in PC
- Functional buttons for quick application development
- Historical Viewer* to see stored data on PC

BrainChild

SmartPanels Specifications

| Model | HMI 450 | HMI 730 | HMI 750 | HMI 1050 | HMI 1550 |
|--|--------------------------------------|---------------------------------------|---|---|---|
| Display | | | | | |
| Size | 4.3" | 7" | 7" | 10.4" | 15" |
| Resolution (W X H) | 480 x 272 | 800 x 480 | 800 x 480 | 1024 x 768 | 1024 x 768 |
| Display type | TFT, Wide Screen | TFT, Wide Screen | TFT, Wide Screen | TFT | TFT |
| Colors | 65,536 | 65,536 | 65,536 | 65,536 | 65,536 |
| Touch screen Type | Resistive analog touch screen | Resistive analog touch screen | Resistive analog touch screen | Resistive analog touch screen | Resistive analog touch screen |
| MTBF back light at 25 °C | 30,000 hrs | 50,000 hrs | 50,000 hrs | 50,000 hrs | 50,000 hrs |
| Active display area (W X H mm) | | | | | |
| Backlight | LED | LED | LED | LED | CCFL |
| Brightness Adjustment via Touch panel | ● | ● | ● | ● | ● |
| Brightness, cd/m ² | | | | | |
| Contrast Ratio | | | | | |
| Screen Saver | ● | ● | ● | ● | ● |
| Language Fonts | ● | ● | ● | ● | ● |
| A Pen for easy Touch screen Operation (Stylus pen) | ● | ● | ● | ● | ● |
| Hardware | | | | | |
| Processor, CPU speed | ARM 9, 400Mhz | ARM 9, 400Mhz | ARM 9, 400Mhz | ARM 11, 800MHz | ARM 11, 800 MHz |
| Flash Memory | 64 MB | 64 MB | 128 MB | 128 MB | 128 MB |
| Lithium Memory | ● | ● | ● | ● | ● |
| Real Time Clock | ● | ● | ● | ● | ● |
| Buzzer | ● | ● | ● | ● | ● |
| Video Input | N.A | N.A | Option | Option | Option |
| Sound Input/Output | N.A | N.A | Option | Option | Option |
| SD card slot | ● | N.A | ● | ● | ● |
| Communication ports/Interfaces | | | | | |
| RS232C, DB9 Male | 1 | 1 | 1 | 1 | 1 |
| RS232C/ RS422/ RS485, DB25 Female | 1 | 1 | 1 | 1 | 1 |
| Ethernet 10/100 Mbps, RJ45 | 1 | 1 | 1 | 1 | 2 |
| USB Host | 1, USB 1.1 | 1, USB 1.1 | 1, USB 1.1 | 1, USB 1.1 | 1, USB 1.1 |
| USB Client | 1, USB 2.0 | 1, USB 2.0 | 1, USB 2.0 | 1, USB 2.0 | 1, USB 2.0 |
| PROFIBUS, PROFINET | Option | N.A | Option | Option | Option |
| DeviceNet, EtherNet/IP | Option | N.A | Option | Option | Option |
| CANopen, EtherCAT | Option | N.A | Option | Option | Option |
| CC-Link, Bluetooth | Option | N.A | Option | Option | Option |
| Electrical | | | | | |
| Rated Voltage | 24 V DC | 24 V DC, 110/220V AC | 24 V DC, 110/220V AC | 24 V DC, 110/220V AC | 24 V DC, 110/220V AC |
| Rated Voltage Range | 12-30V DC | 12-30V DC, 90-250V AC | 12-30V DC, 90-250V AC | 12-30V DC, 90-250V AC | 12-30V DC, 90-250V AC |
| Rated Current | | | | | |
| Power Consumption | | | | | |
| Power on LED | ● | ● | ● | ● | ● |
| Mechanical | | | | | |
| Size (W X H X D mm) | 160 X 130 X 52 | 222 X 162 X 52 | 222 X 162 X 52 | 335 X 263 | 400 X 310 |
| Panel cut (W X H mm) | 123 ⁺¹ X 99 ⁺¹ | 197 ⁺¹ X 141 ⁺¹ | 197 ⁺¹ X 141 ⁺¹ | 310 ⁺¹ X 248 ⁺¹ | 367 ⁺¹ X 289 ⁺¹ |
| Front enclosure | Plastic, IP65 | Plastic, IP65 | Aluminum alloy, IP65 | Aluminum alloy, IP65 | Aluminum alloy, IP65 |
| Stainless Steel front enclosure | N.A | N.A | Option, IP66K | Option, IP66K | Option, IP66K |
| Installation | Panel Mount | Panel Mount | Panel Mount | Panel Mount | Panel Mount |
| Net Weight | | | | | |
| Protection | IP 65 front, IP20 rear | IP 65 front, IP20 rear | IP 65 front, IP20 rear, S.S. front: IP66K | IP 65 front, IP20 rear, S.S. front: IP66K | IP 65 front, IP20 rear, S.S. front: IP66K |

● Available

Environmental

Operating temperature: 0 °C to 50 °C
 Storage temperature : -20 °C to 60 °C
 Humidity : 20 % to 80 % RH

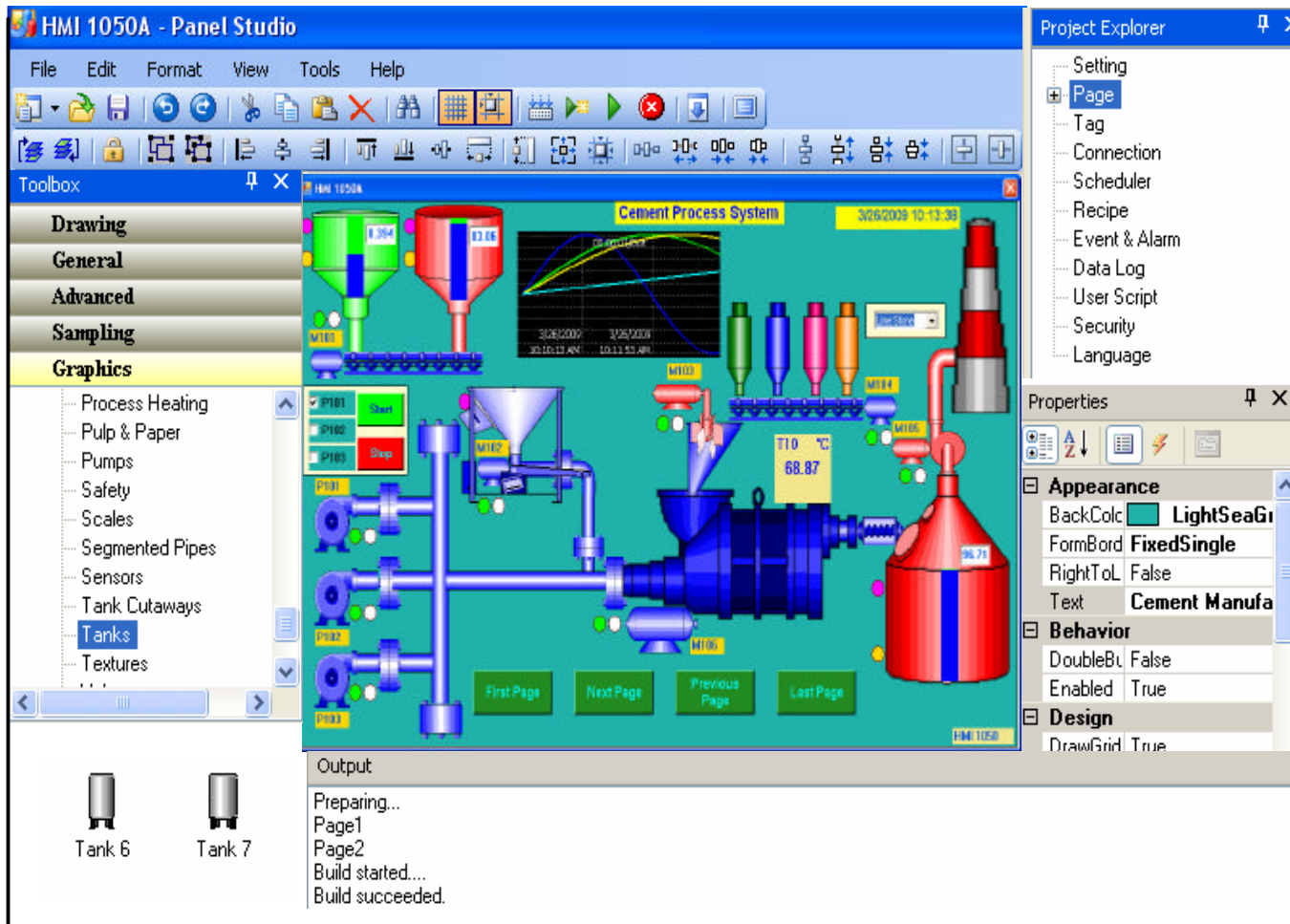
Vibration resistance: 9 to 150 Hz, 9.8 m/s², X,Y & Z directions 10 times (100 min.)
 Operating Shock resistance : 15g at 11 msec
 Altitude : 2000 m

Safety : UL 61010C - 1
 CSA C22.2 No. 24-93
 EN 61010-1 (IEC 1010-1)
 EMC : EN61326

Panel Studio Features

Panel Studio is free editing software for Brainchild **SmartPanels**. **Panel Studio** editing software is powerful, user friendly and it has a lot of ready-made fine components, application development tools, editing tools and animation features.

Panel Studio Plus offers Symbol Factory with thousands of symbols for many industrial applications



Real/Historical Alarms are possible, 7 type of Alarms available for Configuration

Data Logger is Available, 4 data log methods, 2 log trigger types and 10 data log rates are possible

Data Logging to Internal memory & USB flash memory is possible

PC tools for data archive via Historical viewer. All data stored in USB flash can be archived in PC

Search Historical data with respect to Time, Time period and export to CSV files

Real Time and Historical Trends. Max. 24 pens/trend object

Security management, 100 users with 10 levels to meet FDA CFR part11 compliance

Multi language support is Available. Supports Unicode including south eastern languages

Reusable templates. Any pages can be saved and reuse in other projects

Extensive PLC drivers (Serial & Ethernet) for communicating with wide range of PLC's on various protocols

Multiple drivers at 2 serial COM ports and Ethernet is possible simultaneously

Multiple scan rate for PLC tags, Possible to scan a tag always or on active page mode

Generation of Reports in meaningful and useful for supervisors and operators

Data exchange between two different PLC's, HMI for gateway applications

Data exchange between two HMI's via Modbus, Master/Slave applications

Webserver to view HMI screens via browser via Internet

Application program transfer by Ethernet, Serial Ports and USB flash memory

Symbol factory with hundreds of high resolution symbols for many industries

Vector Graphics capability and multi layer transparency. Other formats include bmp, wmf, jpg, gif & png

Support Multiple sessions to open different projects at the same time in PC

Support True windows fonts, size, styles for using with Text displays

Edit source code via C# in .Net environment

Integrated Ethernet port for Program download and also connecting to devices via different Ethernet protocols

WinCE offers real time capability and reliable platform for high performance control solutions

Powerful editing software with User friendly tools for application development

Project explorer to quickly view hierarchy of all objects in screen editor

Project compiler to verify the application development (build) before downloading to HMI

Advanced components for quick application development

Special Functional Buttons for Page navigation, Alarm, trend and Data log controls

Scheduler for triggering actions at various time interval and clock settings

Recipe management for Batch process

Script/Macro programming to write expressions for performing Mathematical and Logical calculations

Online/Offline Simulation to test developed projects quickly by simulating them in PC

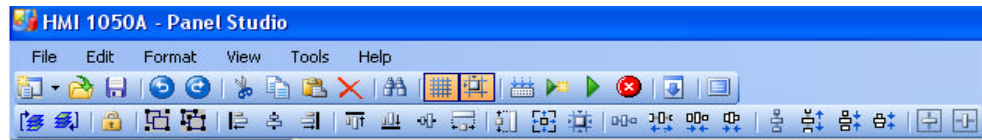
Dynamic objects with Animation capabilities for understanding process conditions quickly for operators

Internal Variables are available and useful in Mathematical calculations

Alarm Management- Max. 9 groups are available

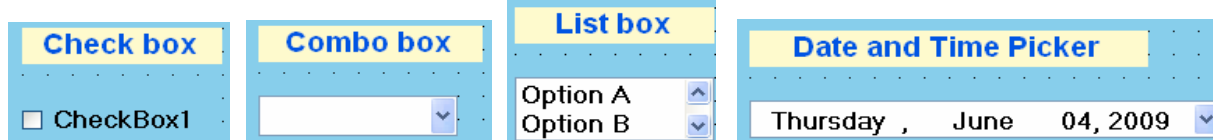
Panel Studio Features

Menu Bar



General Tools

Label, Text box, Button, Language Selector, Picture Box, CheckBox, Combo box, List Box, Data/Time picker, Numerical Up/Down

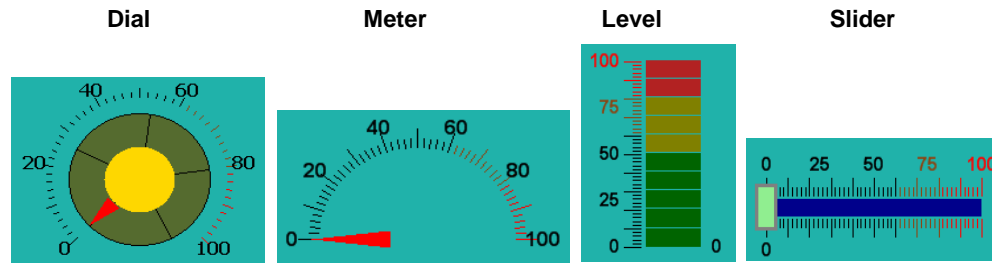


Drawing Tools

Line, Polygon, Rectangle, Ellipse, Arc, Pie

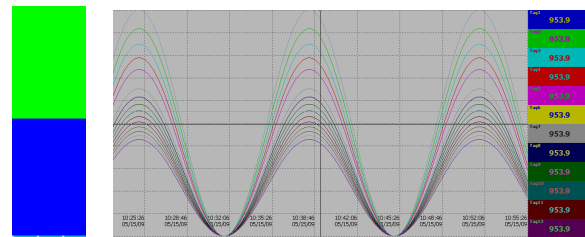
Components

Dial, Digital LED, Level, Meter, Slider, Switch, Thermometer



Sampling Tools

Digital values, Bar graphs, Historical Trends, Real Time Trends, Real Time Alarms & Historical Alarms



Special Functional Buttons

Page Control, Alarm Control, Historical Trend Control, Schedule Control & Data log control

Project explorer

This for for quick access of main tasks. Page Creation, Tag data base addition, PLC driver configuration, Scheduler, Recipe, Events/Alarms, Data Logging, User Scripts, Security & MultiLanguage

Editing Tools

Undo, Redo, Cut, Copy, Paste, Delete, Search, Show grid, Align to grid, Build, Download, Bring to Front, Sent to back, Lock, Group & Ungroup

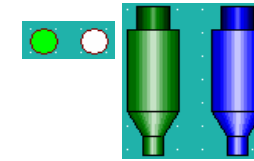
Align tools: Left, Center, Top, Right, bottom & Middle

Size adjustment tools: Make same width, height, size, Size to grid, Horizontal/Vertical space -equal, increase,decrease &Remove



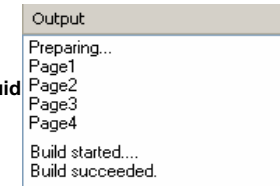
Animation Features

Color change, dynamic real time (Foreground/Back ground), Flash, Position (Diagonal, Vertical, Horizontal) & Visibility



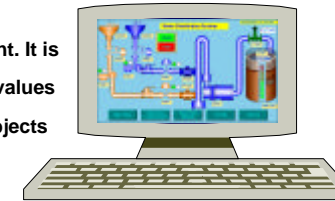
Project Compile

It is to check problems in application development like syntax errors, missing tags for objects etc. After succesful compilation, it creates a build for Downloading to HMI



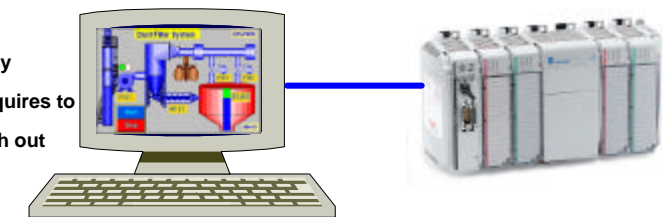
Offline Simulator

To test HMI project in Offline at PC during application development. It is possible to enter tag values via Tabular caulmn, simulate the tag values and then check the behaviour and properties of components & objects with out downloading HMI project build to HMI



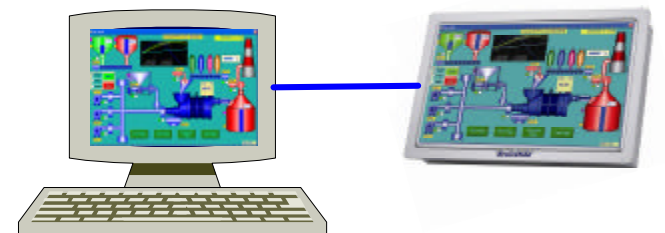
Online Simulator

To test HMI application in PC by connecting PLC directly to PC. By default, Online simulator in PC works for 2 hrs time duration.It requires to buy License for using Online Simulator function contineously with out any time limit in PC. Then, it becomes SC



Project Download methods

Ethernet, COM1, COM2 Serial Ports & Removable disk



Programming in C#

It allows to develop high end HMI application using C# and it is useful for advanced programmers

Panel Studio Features

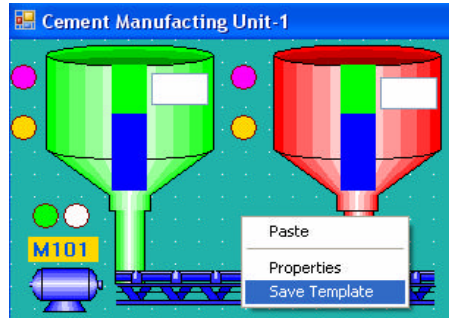
Quick retrieval by Tabs

All edited tools including pages in Project explorer can be accessed quickly using tabs from Main screen working area For ex: If user has edited 3 screens, tagdata base, alarms, all these can be accessed using tabs from main screen itself for quick retri



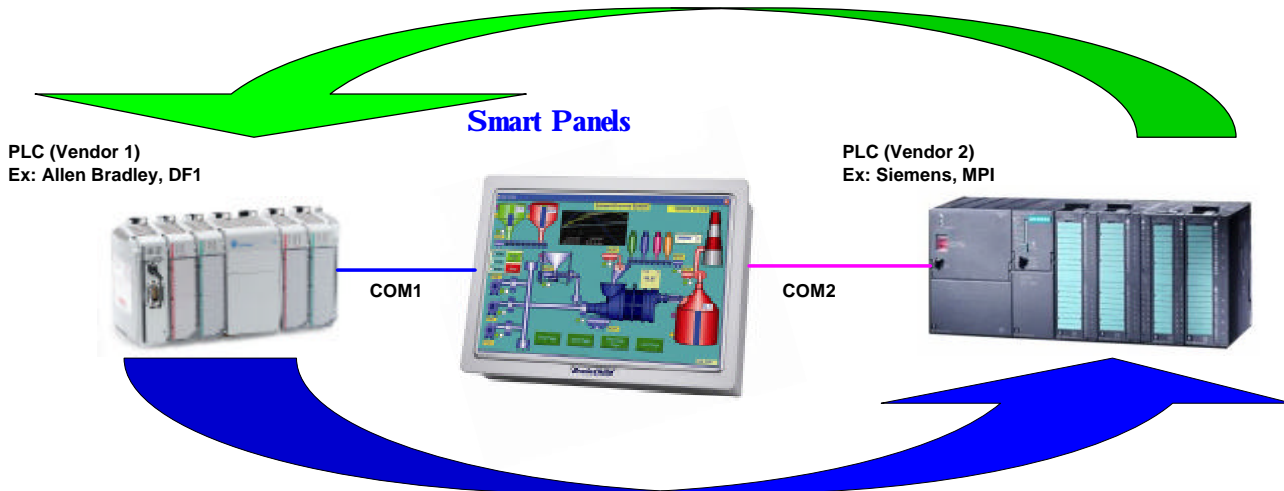
Reusable screen templates

Any screen in the project can be saved as template in specified folder and these pages can be reused in another projects of HMI with same size. This helps rapid application development for the programmer and save time by development manhours and project costs



Multiple drivers and Data exchange

It is possible to simultaneously exchange data from different PLC's to HMI via different ports simultaneously. Then, tools are available in HMI software to copy Tags from COM1 port to COM2 or Ethernet or to Internal memory and vice versa for further usag



Historical data archival

Historical data and Events are stored in Internal memory first, then transferred to USB flash driver or SD card. Advanced and user friendly Data acquisition tool is used in PC to archive historical data.events stored in HMI. The features of Data acquisition software include the following

- Display Historical trend
- Display Historical alarms/Events
- Display Reports (Daily, Weekly & Monthly)
- Display Historical values in tabular column

Mark Remarks on data (comments)

- Search data by Time, Timer Period, Event/Alarm, tag wise and Remarks
- View trends both Horizontally and Vertically
- Zoom out & Zoon In

Display view options available at 1 sec/dot, 2 sec/dot, 5 sec/dot, 10 sec/dot, 20 sec/dot, 30 sec/dot, 1 min/dot, 2 min/dot, 5 min/dot, 10 min/dot, 30 min/dot, 10 min/page, 30 min/page, 1 hr/page, 2 hr/page, 4 hr/page, 8 hrs/page, day/page, week/page and Month/page

- Display white back ground/black background
- Print trend view, Event/Alarm list, Reports & Tag Values

Export data and alarms/events to CSV files. (Specify time or time period or all)

Scheduler types

- Countdown To trigger an action one time after elapse of time
- Repeat Countdown To trigger an action repeatedly as per sepecified time interval
- Daily To trigger an action every day at specified time
- Weekly To trigger an action weekly once at specified time
- Monthly To trigger an action Monthly once at specified time
- Conditions for Trigger Possible to write expression via script/Macro programming

Script, supported functions

| | |
|----------------------|--|
| System functions | Predefined system functions like ack.alarms, start/stop scheduler etc. |
| Math functions | Trigonometric, Log, Exp, Round, Power etc. |
| Arithmetic functions | Addition, Subtraction, Multiply, Division, Remainder |
| Logical functions | And, Or, True, False, Not etc.. |
| Shift functions | left, Right |
| Relational functions | "=", "!=", ">", "<", "<=", ">=" |
| Assignment functions | "=", "+=", "-=", "*=", "/=", "%=", "&=", "!=", "<<=", ">>=" |
| Selection functions | If, Else |
| Iteration functions | While, For |
| Jump functions | Break, Continue |
| User tag | User tag list to use in script |

Alarms

Real Time, Historical Alarms

| Alarm Types | Alarm control functions | Job Types |
|--------------------------|---|--------------------|
| Hi | Acknowledge | |
| Low | Dump | Log Alarm |
| High High | Clear | Log Auto Ack Alarm |
| Low Low | First page | Log Event |
| Dev + | Last page | |
| Dev - | page up | |
| Error | Page down | |
| Alarm Setpoint Reference | Constant or Tag | |
| Hysteresis | Available | |
| Conditions for Trigger | Possible to write expression via script/Macro programming | |
| Customized alarm message | Possible | |

Data Logging

| Log Trigger type | Log Speed |
|----------------------|---|
| Timer | 100 msec, 1,2,5,10,20,30 sec, 1, 5 & 10 min |
| Process value Change | |
| Max. data points | As per Predefined Set point |

| Log Method | Data Log Control | Historical trend control |
|------------|--------------------|--------------------------|
| Instant | Start data logging | First page |
| Average | Stop data logging | Next page |
| Minimum | Clear data | Previous page |
| Maximum | Dump data | Last page |
| | | Zoom in |
| | | Zoom out |
| | | Zoom AI |

Special Function Buttons

- Page Control functions Navigate to Various pages- First, Next, Last, Previous, Page by number
- Alarm Control functions Dump, Clear, move to first page, last page, move to up alarm, down alarm
- Historical Trend Control Zoom In, Out, All, Move to First page, _Previous page, Next page, Last page

- Data Log Control Start/Stop data logging, Dump, Clear
- Scheduler Control Start/Stop specific schedule

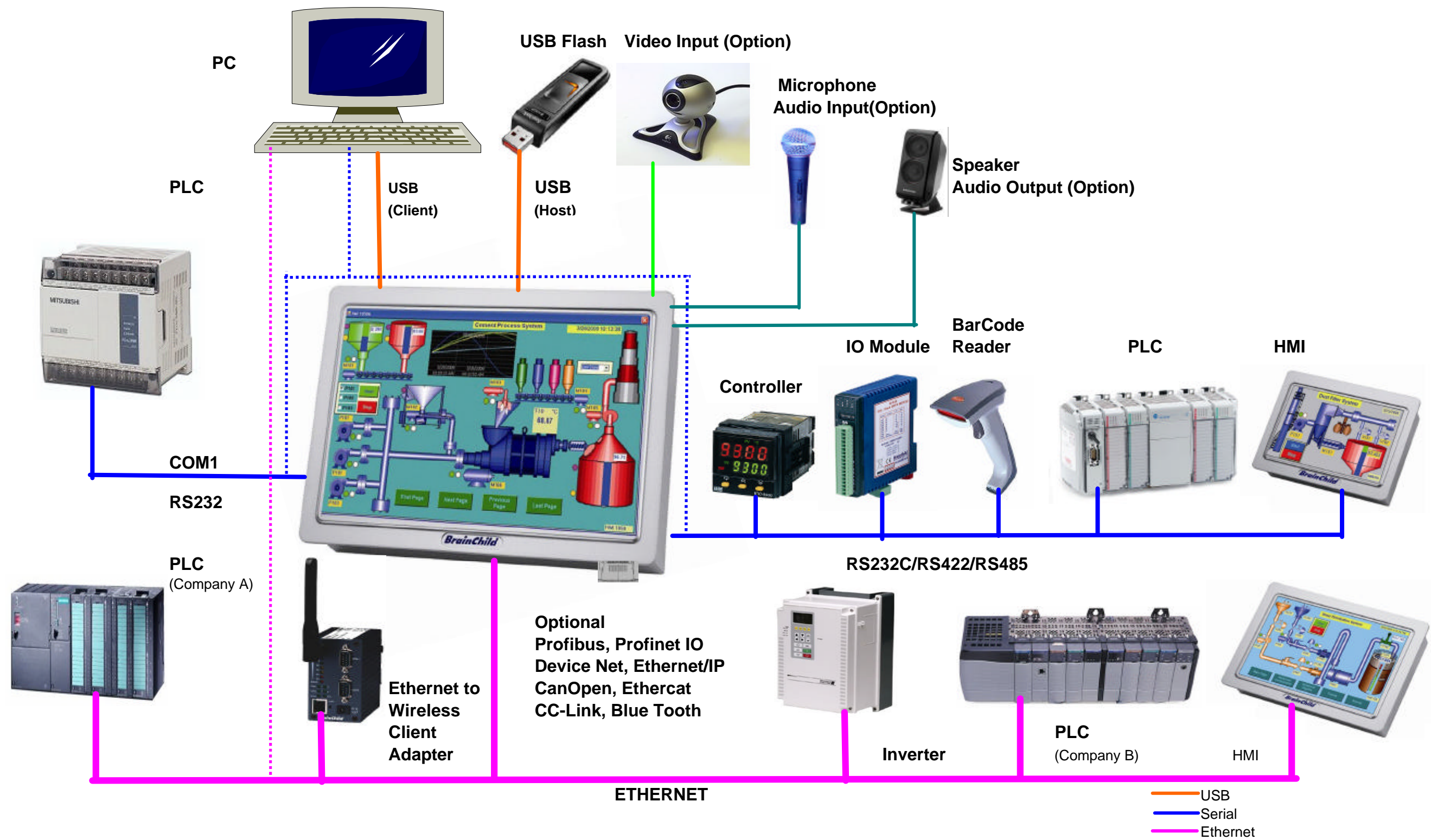
Tag Database

| | |
|--------------------------|------------------------------------|
| Internal memory tag type | Digital, Analog, String, Date/Time |
| Tag Scan mode | Active page or Always |
| Tag Scan rate | 100 msec to 10,000 msec |
| Simulation of Tag | Possible |

Security

| | |
|--|---|
| Number of users | 100 |
| Number of Levels | 10 |
| Password expiry period | Setting of No.of days or Unlimited option |
| Prevent operators from unauthorized access to applications, controls and screens | |

Fig: Schematic application

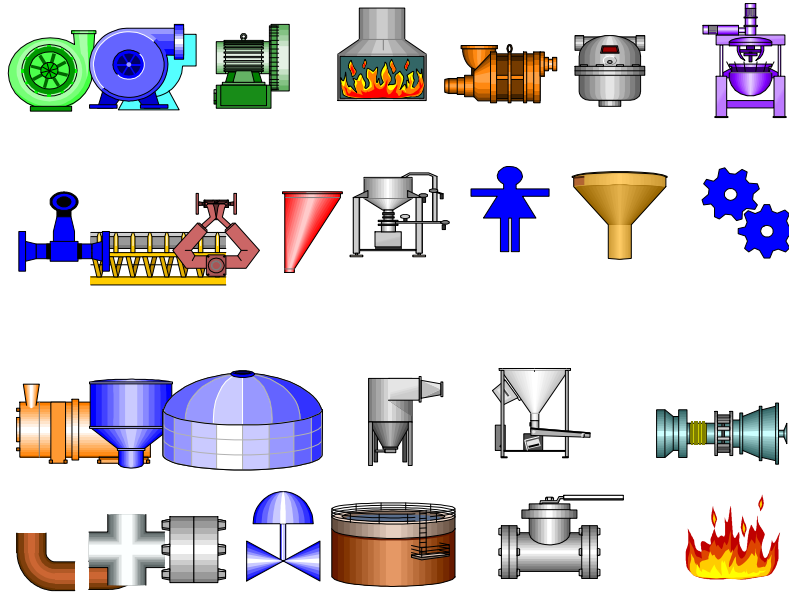


* Simultaneous communication possible at 2 nos.COM ports and Ethernet

* Support 1:N, Multidrop (One HMI to many PLC's) and N:1, Multilink (Many HMI's- One PLC) configuration as per Protocol specification

Optional Symbol Factory

Optional Symbol factory with thousands of high resolution symbols (vector graphics) for various industries are available in **Panel Studio Plus** software.



Categories

| | | |
|------------------|-----------------------|-----------------------|
| Air Conditionin | Finishing | Motors |
| Architectural | Flexible Tubing | Nature |
| Arrows | Flow Meters | Operator Interface |
| Ashrae Controls | Food | Panels |
| Ashrae Ducts | General Mfg. | Pipes |
| Ashrae Piping | Heating | Plant facilities |
| Basic Shapes | HVAC | Power |
| Blowers | Icons and Bitmaps | Process Cooling |
| Boilers | Industrial Misc. | Process Heating |
| Buildings | International Symbols | Pulp & Paper |
| Chemical | ISA symbols | Pumps |
| Computer Hardw | ISA symbols (3-D) | Safety |
| Computer Keys | Laboratory | Scales |
| Containers | Machining | Segmented Pipes |
| Controllers | Maps and Flags | Sensors |
| Conveyors, Belt | Material Handling | Tank Cutways |
| Conveyors, Misc. | Mining | Tanks |
| Conveyors, Simp | Misc.Pipes | Textures |
| Ducts | Misc. Symbols | Valves |
| Electrical | Mixers | Vehicles |
| | | Water and Waste water |
| | | Wire & Cable |

* Easy drag/drop of symbols to screen working area

* Transparent or background color can be selected for any symbols

* Animations are supported for symbols. Dynamic actions Color change dynamically in real time, Flash, Position (Diagonal, Vertical, Horizontal) & Visibility control

* Import bmp, wmf, jpg, gif & png files via Picture box tool available in editing software

* All symbols are vector graphics which occupies less memory

* With **Panel Studio** software, only first symbol in each category can be selected. If all the symbols are required, it requires

PLC drivers

Extensive driver list available for communication of HMI with Various PLC's, Inverters and third party devices via Serial (RS232, RS422, RS485) and Ethernet protocols. HMI can communicate on both serial ports and Ethernet simultaneously

Serial Protocols

| Manufacturer | Protocol | Model |
|-----------------|-------------------------------|--|
| Allen Bradley | DF1 protocol | DF1- SLC 50X, MicroLogix, Control Logix, PLC5 |
| Allen Bradley | DH485, DH+ | PLC-5, SLC series, ML series, Control Logix series |
| Beckhoff serial | KS8000 protocol | BC8000, BC81XX, CX 90X0 & CX 10X0 series |
| Danfoss | FC protocol | VLT series, FC series |
| Delta | DVP serial | DVP-ES,DVP-EX,DVP-SS,DVP-SA,DVP-SX,DVP-SC,DVP-EH,DVP-EH2, DVP-SV,DVP-PM |
| Fatek | Fatek | FB series |
| Festo | Serial Fst | FEC series |
| Fuji | T-Link protocol | MICREX- F series |
| Fuji | Micrex Series protocol | SPH 200, SPH 300, SPH 300EX, SPH 2000 |
| GE Fanuc | Series Ninety protocol (SNP) | Micro PLC,GE 90-30/ 90-70, Versa Max |
| GE Fanuc | SNP-X protocol | Micro PLC,GE 90-30/ 90-70, Versa Max |
| Hitachi | Hitachi Hi protocol | Micro EH, EH, & H series PLC's |
| IDEC IZUMI | Data Link | MicroSmart,OpenNet Controller,Micro3 |
| Koyo | Direct Net, Modbus RTU | DL05, 06, 105, 205, 305 & 405 series |
| Koyo | K Sequence | DL05, 06, 105, 205 & 405 series |
| Keyence | ASCII | KV 700, KV1000, KV3000 & KV5000 |
| Lenze | LECOM | 8200, 9300 series? |
| LG | LG Cnet | GM series, MK series-K80S, K120S, K200S, K300S, K1000S, XGB & XGK series |
| Matsushita | Mewtocol | FP series-FP0, FP2, FP-X, FP-Sigma, FP2SH |
| Modicon | Modbus ASCII, RTU Master | Any device |
| Messung | Modbus RTU | Nextgen 2000, 5000 series |
| Moeller | CanOpen | XC100, XC200 series (Via Canopen option converter) |
| Mitsubishi | Melsec | FX, A, QnA & Q series, FX direct CPU port |
| Omron | HostLink | CV, CVMX, CX, CH, CS, CJ, CQM1H series |
| Siemens | PPI | S7-200 |
| Siemens | MPI | S7-300/400 |
| Schneider | UniTeleway | TSX-Micro & TSX series |
| Toshiba | Computer link,T series serial | S2E/ST2 series |
| Toshiba | T1-micro series serial | T1-Micro |
| Vigor | Vigor Serial | M, VB, VH series |
| Yaskawa | Memobus- MP Serial | Memocon, MP-900 & MP-2000 series |
| Yaskawa | Inverter serial | Varispeed, F7, G7, L7, VS series |
| Yokogawa | Factory Ace FA-M3 serial | FA-M3 model F3SPX series |

Ethernet Protocols

| Manufacturer | Protocol | Model |
|------------------------|-------------------------|--|
| Allen Bradley Ethernet | Ethernet/IP, CIP | Micrologix, SLC 500, PLC-5, Control Logix |
| Beckhoff Ethernet | Beckhoff Ethernet | CX90X0 & CX10X0 |
| Delta Ethernet | Delta Ethernet Protocol | DVP-SV series |
| Fatek Ethernet | Fatek Ethernet | FB series |
| Festo-Ethernet | EasyIP Fst | FEC series |
| GE Ethernet | S RTP | GE 90-30/ 90-70, Versa Max |
| Hitachi Ethernet | H series Ethernet | EH and H series PLC |
| Koyo Ethernet | Direct ECOM | DL05,06, 205, 405 |
| Keyence Ethernet | Keyence Ethernet | KV 700, KV1000, KV3000 & KV5000 |
| LG Ethernet | LG Fast Ethernet | GM series, MK series 200S, 300S, 1000S, XGB & XGK series |
| Modicon | Modbus TCP Master | Any device |
| Mitsubishi Ethernet | A, Q, QnA & FX Ethernet | A, Q, QnA & FX series PLC |
| Omron Ethernet | FINS UDP | CH,CS & CJ Series |
| Siemens S7 Ethernet | Siemens TCP/IP | S7-200,300, 400 (Connection Via CP card at PLC) |
| Toshiba Ethernet | Toshiba Ethernet | T, S2T, S2E series |
| Yaskawa MP Ethernet | Memobus Ethernet | MP-900 & MP- 2000 series |
| Yokogawa Ethernet | Yokogawa FA-M3 Ethernet | FA-M3 model F3SPX series |

SmartPanels Ordering Code

| | | | | | | | |
|----------|---|---|---|---|---|--|---|
| HMI 450 | 1 | 0 | 0 | 1 | | | 0 |
| HMI 730 | | 0 | 0 | 0 | 0 | | 0 |
| HMI 750 | | | | 1 | | | |
| HMI 1050 | | | | 1 | | | |
| HMI 1550 | | | | 1 | | | |

Power Input
 1: 12 to 30 V DC
 2: 90 to 250 V AC

Video input
 0: None
 1: Yes

Sound Input/Output
 0: None
 1: Yes

SD card Slot
 0: None
 1: Yes

Communication
 0: None
 1: PROFIBUS
 2: PROFINET
 3: DeviceNet
 4: EtherNet/IP
 5: CANopen
 6: EtherCAT
 7: CC-Link
 8: Bluetooth

Software
 0: Basic Editing & Data acquisition software **Panel Studio**
 1: Extensive Software **Panel Studio Plus** with Symbol Factory

Enclosures
 0: Standard - HMI 450: all plastic, HMI 730, 750: alloy front, plastic rear, HMI 1050, 1550: alloy front, metal rear
 1: Stainless Steel front, metal rear for Food, Beverage & Pharmaceutical industries, HMI 750, 1050, 1550 only

Optional Accessories

| Part Number | Description |
|-------------|--|
| CC94-1 | RS232 interface, PC to HMI application download cable, 2 meters std.length |
| | RJ45, Ethernet Cross Over , PC to HMI application download cable |

Note: Please refer ordering code of PLC cables, protective screen covers, SD card to HMI accessories list

BrainChild

BRAINCHILD Electronic Co., Ltd.
 6F., No.209, Chung Yang Rd., Nankang Dist.,
 Taipei, Taiwan, R.O.C
 Tel: 886-2-27861299 Fax: 886-2-27861395
 Email: sales@brainchild.com.tw
 Website: http://www.brainchild.com.tw