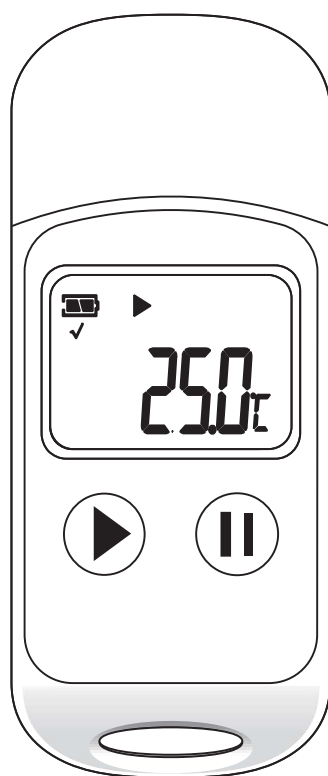


User's Manual

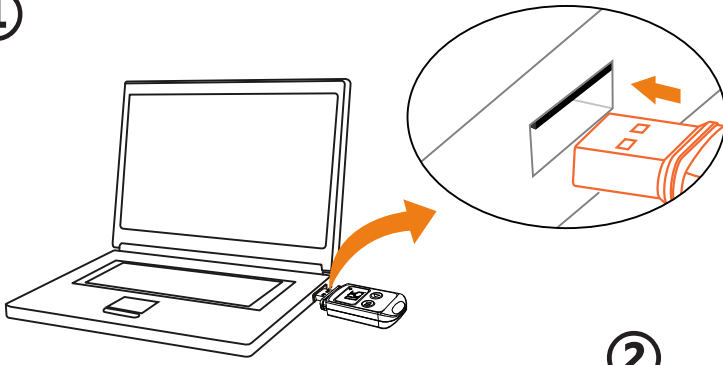


RC-5+

PDF Temperature Data Logger

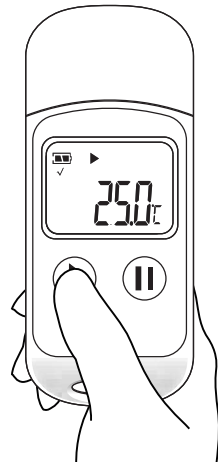
How to use

①



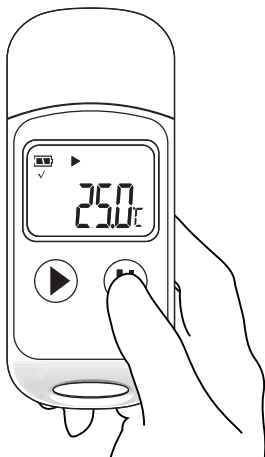
Connect the data logger to a computer to set configuration parameters **I**

②



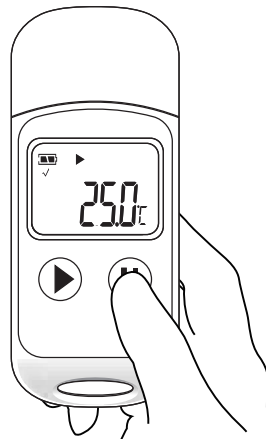
Press and hold the left key for 5 seconds to start recording **II**

③



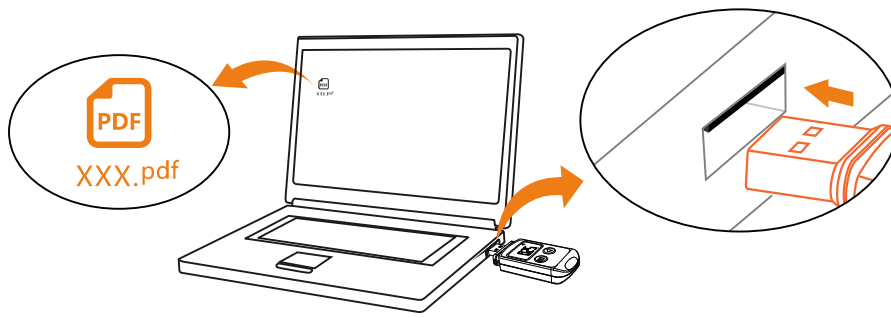
Quickly click the right key twice to mark the current time and temperature

④



Press and hold the right key for 5 seconds to stop recording **III**

5



Open the data report in the newly created removable disk of your computer and view the data. You can also view the data by operating the data management software.

Note:

I Default setting:

Run time: 30 days	Start delay: 0 min
Log interval: 2min	Cyclic record: disabled
Trip ID: 0000001	Temporary report: enable
Time zone: UTC +0:00	Multi-start/stop: enabled
Start mode: press button	Calibration: $\pm 0^{\circ}\text{C}$
Alarm setting: no	Alarm setting: no
Trip description: Temperatrue recording	
Stop mode: press button, via software	

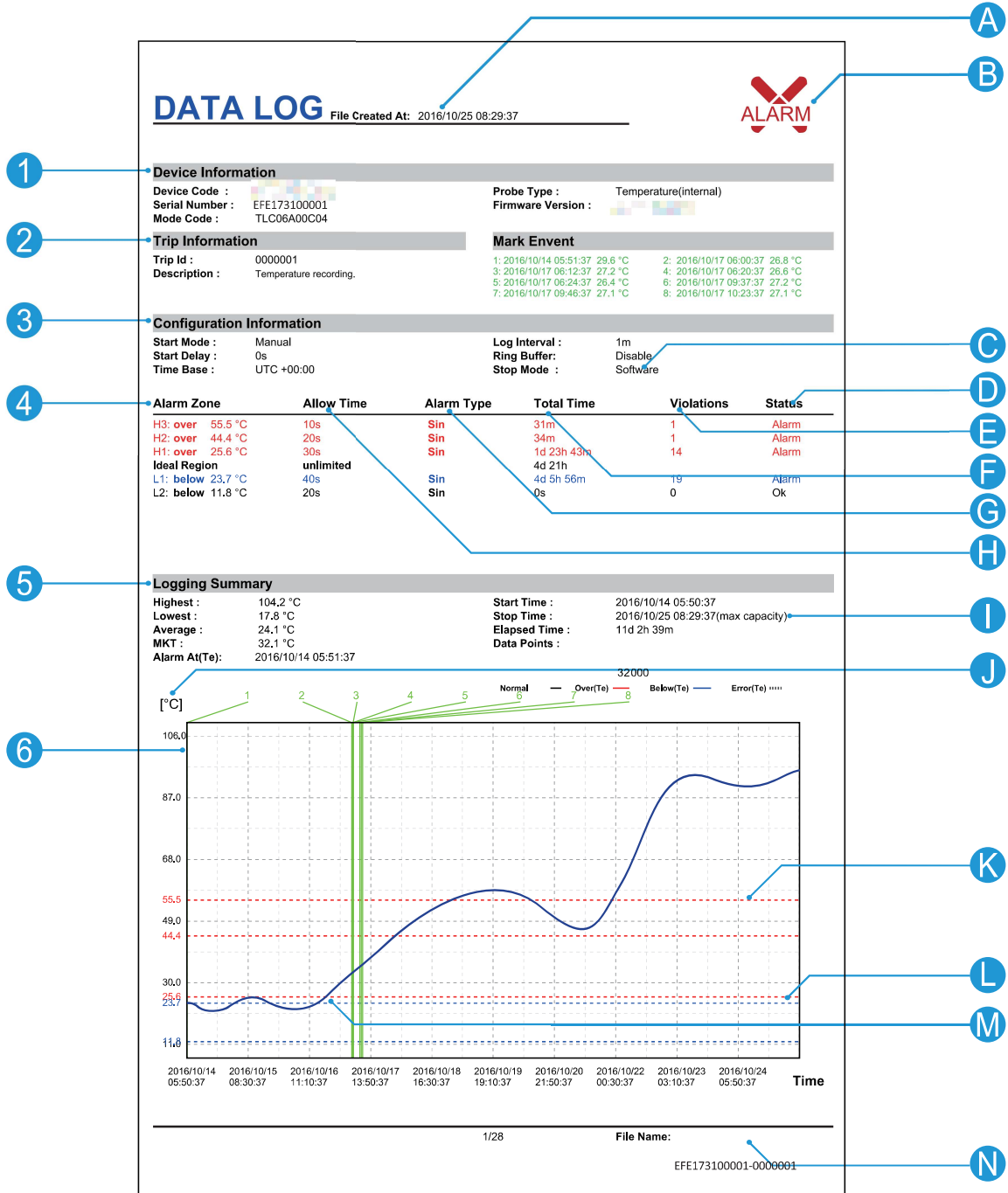
II In the following two cases, the data logger can also be turned on with the left key not pressed.

Immediate start mode: The data logger is turned on immediately after disconnecting with the computer.

Timing start mode: the data logger starts recording at scheduled time after disconnecting with the computer.

③ Directly connect the data logger to the computer with no need to stop it, you may view the temporary report. The logger stops automatically when the set run time elapses.

Data Report



1. Basic information

2. Trip information

3. Configuration information

4. Alarm thresholds and related data

5. Statistics

6. Temperature graph

7. Detailed data

A. File creation time(Record stop time)

B. Alarm indication

(The icon indicates alarm has been triggered)

C. The set stop mode

D. Alarm status of the alarm zones

E. Total times of out-of-limits alarms

F. Total duration of out-of-limits alarms

G. Alarm types

H. Alarm threshold and alarm interval division

I. Stop time (Actual stop mode)

J. Temperature unit

K. Alarm threshold lines (Correspond to item L)

L. Alarm threshold

M. Data curve

Note: Red - above upper temperature

Blue - below lower temperature

Black - within temperature limits

N. File name(serial number + trip ID)

O. Record time rang within the current page

P. The record for two days.(date + temperature)

Q. The record for one day.(time + temperature)

Product Schematic



-
- ① USB protective cover
 - ② LCD screen
 - ③ Key (left) [ⓐ]
 - ④ Key (right) [ⓑ]
 - ⑤ Battery cover [ⓒ]
-

Note:

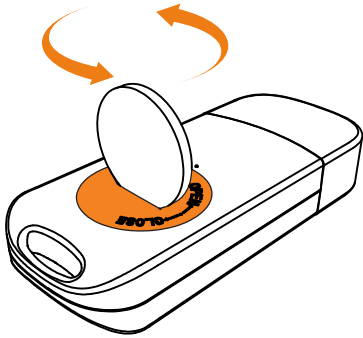
[ⓐ] Left key function

Operation	Function
Press and hold 5s	Start recording
Press once	Light the screen, turn pages

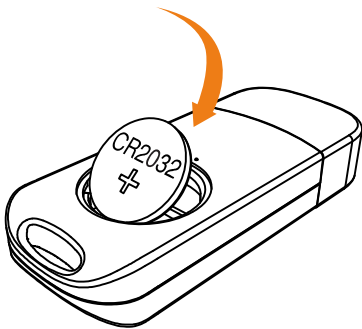
II Right key function

Operation	Function
Press and hold 5s	Stop recording
Press once	Return to main menu
Press twice	Mark the event

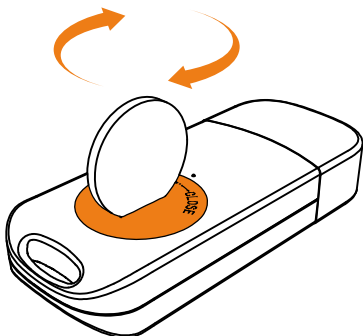
III Replace the battery with a coin as follows:



- ①. Turn the battery cover counterclockwise to open it.

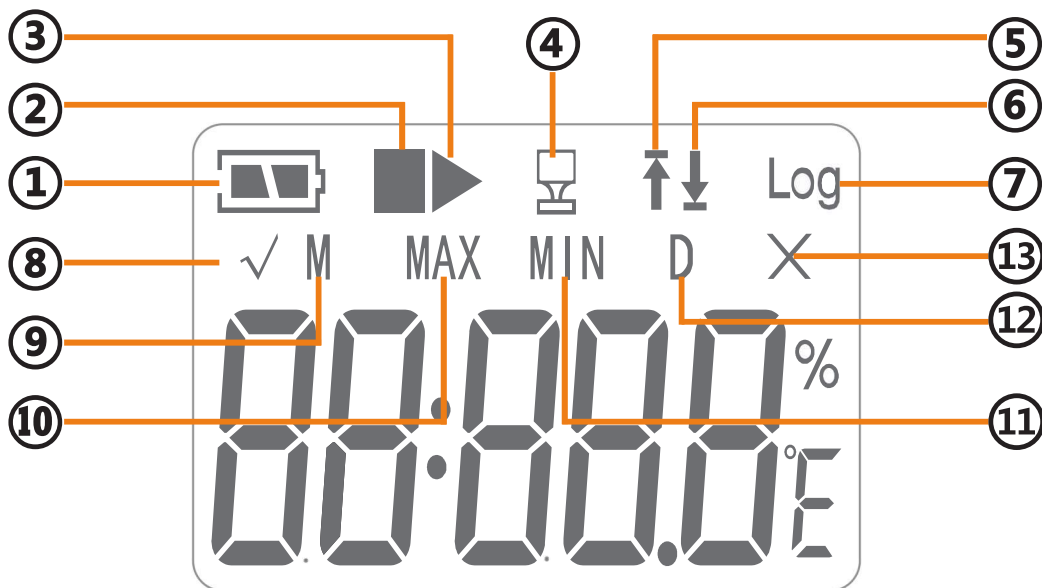


- ②. Put in a new CR2032 button battery, with the negative inward.



- ③. Turn the battery cover clockwise to close it.

LCD Display



① Power indicator

⑧ No alarm/Marked

② Stop status

⑨ Date - month

③ Record status

⑩ Maximum temperature

④ Computer connection

⑪ Minimum temperature

⑤ Alarm: above upper limit

⑫ Alarm/Mark failed

⑥ Alarm: below lower limit

⑬ Alarm/Mark failed

⑦ Current readings

LCD Menu

Press the left key to view the content of each page. Press the right key in any page to return to the first page.



1. Current temperature



2. Number of readings



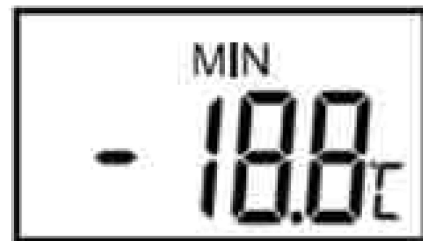
3. Current time: hour:minute



4. Current date: month - day



5. Maximum temperature



6. Minimum temperature

Application

The data logger is mainly used to monitor the temperature of food, medicine, chemicals and other products in storage and transport. It can be widely applied to all links of warehousing and cold-chain logistics, such as refrigerated containers, refrigerated trucks, cooler boxes, cold storage, laboratories, etc.

Precautions

- ◆ Please read the manual carefully before using the logger.
- ◆ To synchronize system time, it is recommended to connect the logger to a computer for parameter configuration before it is used for the first time.
- ◆ The LCD screen will be off after 15 seconds of inactivity. Press the left key to lighten it.
- ◆ Never dismantle the battery. Do not remove it if the logger is running.
- ◆ Replace the battery in time for long distance transport if its power remains half.
- ◆ Replace old battery with a new CR2032 button cell with the negative inward.

Download Link:<http://www.elitechlog.com/software>